

DRC

PZ25-12000027
10/15/2025



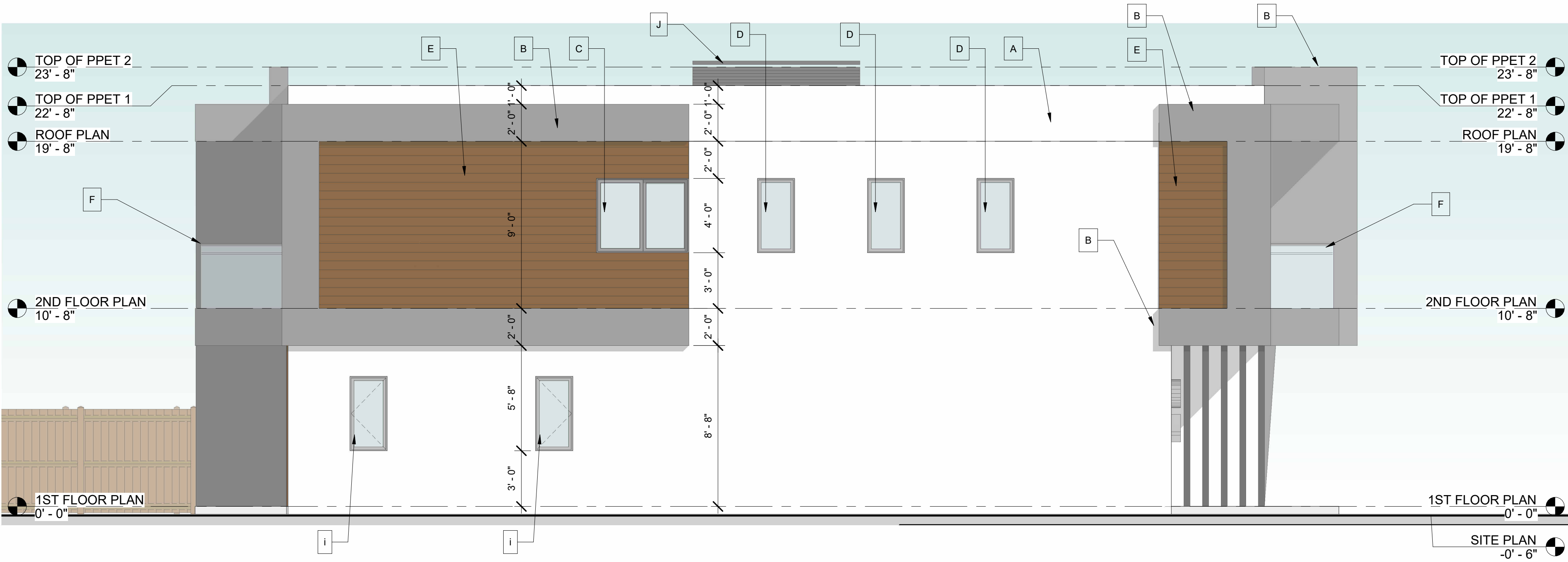
3 3D-1



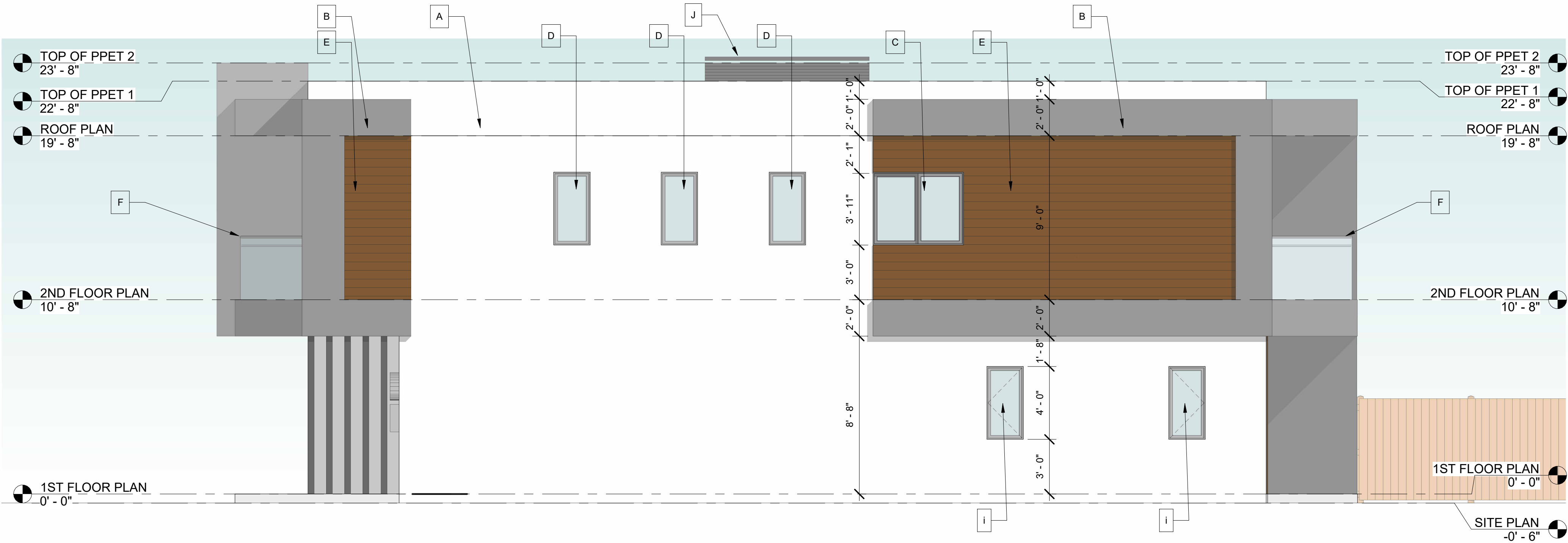
4 3D-3



5 3D View 1



1 PROPOSED WEST ELEVATION
1/4" = 1'-0"



2 PROPOSED EAST ELEVATION
1/4" = 1'-0"

FINISH NOTES

- A 5/8" STUCCO FINISH PAINTED
COLOR: WHITE
- B 5/8" STUCCO FINISH PAINTED
COLOR: DARK GRAY
- B1 5/8" STUCCO FINISH PAINTED
COLOR: LIGHT GRAY
- C IMPACT RESISTANT SLIDING
WINDOW WITH BRONZE ALUMINUM
FRAME.
- D IMPACT RESISTANT FIXED
WINDOW WITH BRONZE ALUMINUM
FRAME.
- E PROPOSED TILE WOOD-SIDING.
- F 1/2" THICK TEMPERED GLASS
GUARDRAIL WITH 1" BUTT JOINT
BETWEEN GLASS AS
MANUFACTURED BY NEO METAL
GLASS, GRS GLASS SYSTEM OR
EQUALS MOUNTED @ 42" A.F.F.
- G IMPACT RESISTANT GLAZING
SLIDING DOOR WITH BRONZE
ALUMINUM FRAME.
- H IMPACT RESISTANT GARAGE DOOR
- I IMPACT RESISTANT CASEMENT
WINDOW WITH BRONZE ALUMINUM
FRAME.
- J 5 FEET HEIGHT DECORATIVE
ALUMINUM SCREEN

Revision		
REV	DATE	BY

PROPOSED 4-TOWNHOUSE DEVELOPMENT FOR:
LOT 933 (PARCEL-B) COLLIER CITY
POMPANO BEACH, FL 33069

SEAL: AR 0017852
LUIS LA ROSA

100% CONSTRUCTION DOCUMENTS

DRAWN:	C.C.
CHECKED:	L.L.R.
DATE:	5/05/2025
SCALE:	AS NOTED
JOB. NO.:	024-021
SHEET:	
A 2.2	
OF:	SHEETS:

1/4" = 1'-0"

9/8/2025 3:52:29 PM